



# SOUTH EAST RADIOLOGY

Dr Philip Whistler M.B.B.S., F.R.A.N.Z.C.R.  
Dr Anthony Grattan-Smith M.B.B.S., B.Sc., F.R.A.N.Z.C.R.

Dr Warwick Lee B.Sc.(Med), M.B.B.S.(HONS), F.R.A.N.Z.C.R., D.D.U.  
Dr Geoffrey Purss M.B.B.S., D.D.R.

Dr Raymond Lau M.B.B.S., D.D.R.

## SOUTH EAST RADIOLOGY ONLINE - APPLICATION INSTALLATION GUIDE

### INTELEVIEWER PACS MINIMUM SPECS

#### MINIMUM

CPU P200 MMX

RAM\* 128MB RAM installed, 32MB of available memory

Monitor 1024 x 768 resolution, 24 bit color

Operating System Windows XP

Browser Microsoft Internet Explorer 8

#### RECOMMENDED

CPU Pentium IV or better

RAM \* 256MB RAM installed, 128MB of available memory

Monitor 1280 x 1024 resolution, 24 bit colour (Accelerated Video Card)

Operating System Windows XP, Windows 7 32 Bit (64 Bit Platforms supported 3rd quarter of 2011)

Browser Microsoft Internet Explorer 6 or higher (Currently only runs on Internet Explorer)

#### IT DEPARTMENTS PLEASE NOTE:

(Applicable to hospital locations or sites which house heavily configured routing equipment. General sites with internet access such as GP's and specialists should not have any trouble with this)

*The software needs the following ports to and from <https://pacs.southeastradiology.com.au> to be open for the software to work accordingly.*

**PORTS: 80,443, 5022, 5035**

**NOTE: If your installation does not go through as below please either email:  
[itsupport@wlpradiology.com.au](mailto:itsupport@wlpradiology.com.au) or contact (02) 4429 2400**



## INSTALLATION

**Go to the following web address:**

<https://pacs.southeastradiology.com.au/InteleViewer-tracks/stable/>

At this point select the relevant installation to your operating system environment. If unsure and running windows just select 32 bit as this will work on all windows platforms.

- **Select Mac OS X if you are running on an Apple Mac.**
- **Only select 64bit if you are sure this will run in your environment otherwise it will fail.**



### **32-bit Windows Installer**

[Download InteleViewer](#)

[Additional Installation Options](#)

### **64-bit Windows Installer**

[Download InteleViewer](#)

[Additional Installation Options](#)

### **Mac OS X Installer**

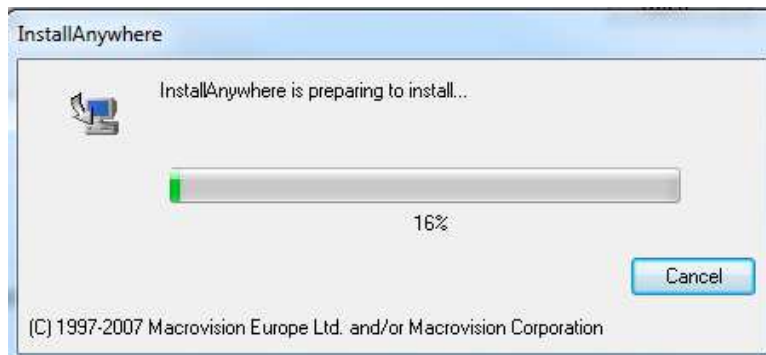
[Download InteleViewer](#)



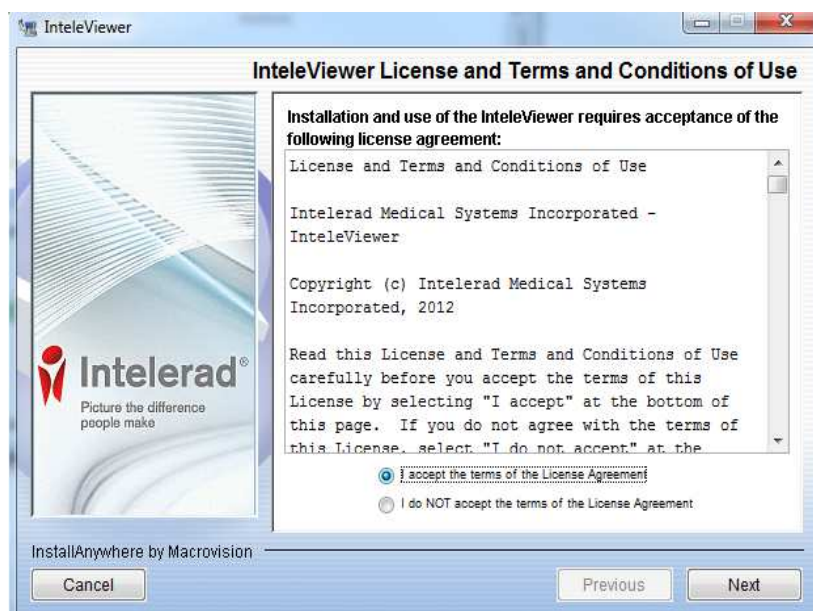
## Select Run, this will run the installation process.

If you choose **Save**, make sure you save it to a place you are familiar such as My Documents or the Desktop for easy retrieval. Once you save it you can double click it and run the application. You will only use the **Save** option if you will want to keep the installation file to avoid re-downloading it later.

## The installation will begin



## Accept the terms in the following window Click Next



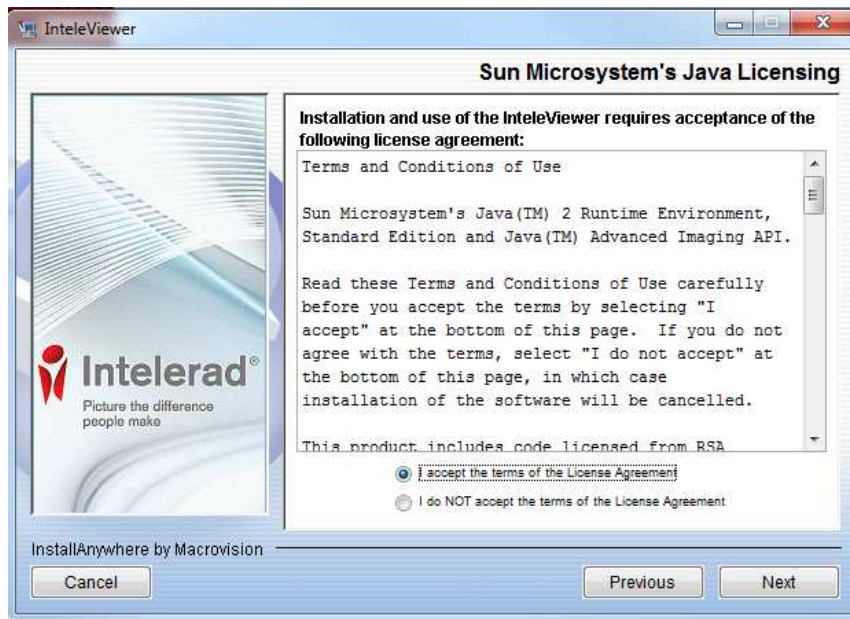


Dr Philip Whistler M.B.B.S., F.R.A.N.Z.C.R.  
Dr Anthony Grattan-Smith M.B.B.S., B.Sc., F.R.A.N.Z.C.R.

Dr Warwick Lee B.Sc.(Med), M.B.B.S.(HONS), F.R.A.N.Z.C.R., D.D.U.  
Dr Geoffrey Purss M.B.B.S., D.D.R.

Dr Raymond Lau M.B.B.S., D.D.R.

## Accept again the terms and conditions and Click Next



## Unless you want to change the default installation location Click Next





Dr Philip Whistler M.B.B.S., F.R.A.N.Z.C.R.  
Dr Anthony Grattan-Smith M.B.B.S., B.Sc., F.R.A.N.Z.C.R.

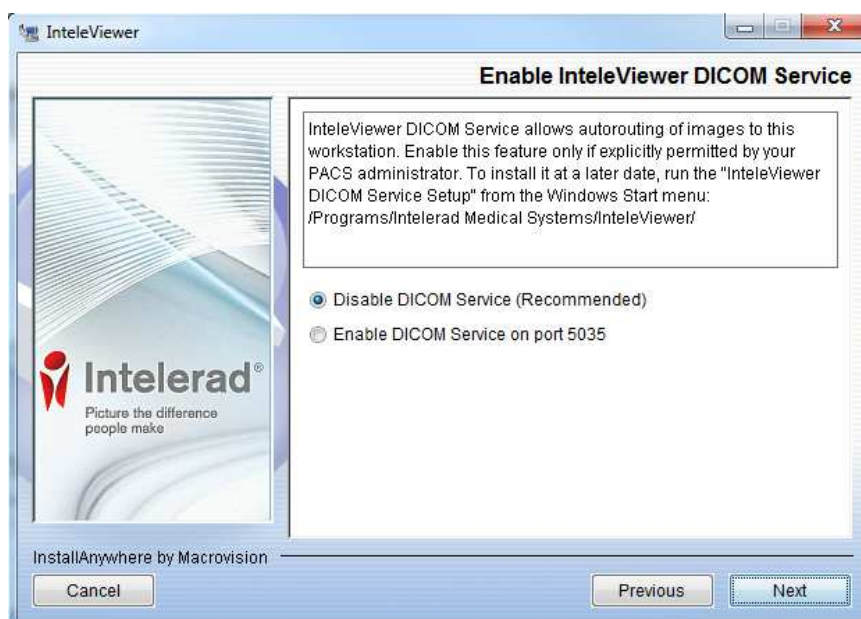
Dr Warwick Lee B.Sc.(Med), M.B.B.S.(HONS), F.R.A.N.Z.C.R., D.D.U.  
Dr Geoffrey Purss M.B.B.S., D.D.R.

Dr Raymond Lau M.B.B.S., D.D.R.

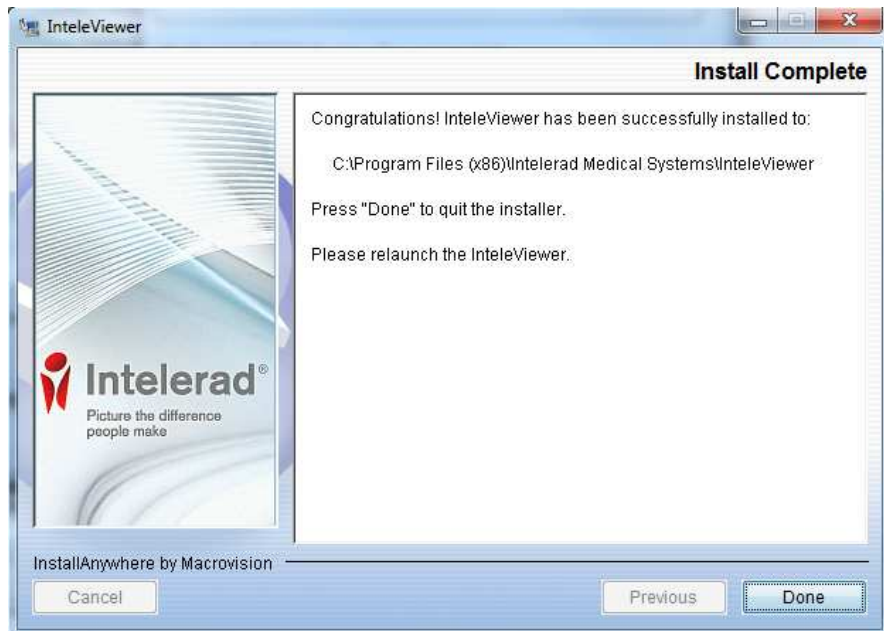
**Click Next on ALL users as below – depending on local IT**



**Click Next. Leave the Dicom Service as Disabled. Click Next**



## Installation is completed



**You should now see the Intelviewer Icon on the desktop. You are ready to add a bookmark. See the next document**

